

# An Insulation Solution



## Tools Needed:

- Sharp Utility
- Scissors
- Measuring Tape
- 4"x180' White Polyethylene Tape



## Installation Instructions

**Insul-Tarp®** has been designed to be installed quickly and easily by following a few easy steps.

- 1) White Side Up.
- 2) **Insul-Tarp®** comes to the customer in roll form. Simply cut the retaining tape with a utility knife or scissors and unfold the tarp.
- 3) Adjust the tarp to where it is square and install the next tarp. The tarps should be overlapped at the seams. Make sure that you have insulation to insulation. For a continuous vapor barrier, seams should be taped using our 4"x180' White Polyethylene Tape.
- 4) When coming to an obstruction such as plumbing, simply put the tarp up to the obstruction, with scissors or a sharp utility knife, cut an "X" in the tarp. Slide the tarp over the obstruction and continue. When cutting the tarp to size, use scissors. Then place a piece of 4" White Polyethylene Tape over the slit and continue pouring.
- 5) **Insul-Tarp®** is manufactured with grommets in the side flanges. These grommets can be used to tie down the tarps in windy conditions.
- 6) If air pockets occur, when pouring the concrete slab, simply cut a slit in the top layer of the tarp to release any trapped air. Then place a piece of appropriate tape over the slit and continue pouring.

## Helpful Hints

- When cutting the tarps always use scissors, and install the cut edge under the factory edge. If factory edge is not available, simply tape the edge of the tarp.
- When installing the **Insul-Tarp®** on a sunny day, make sure to wear a pair of sunglasses as the **Insul-Tarp®** will reflect the sun's rays.
- When ordering square footage for a project, add 10% for overlap and seamed edges. **Insul-Tarp®** is designed with a 2" vapor seam around the tarp. This overlap provides for an effective vapor/moisture barrier if fully sealed with 4"x180' White Polyethylene Tape. Note: Actual size of tarp may slightly vary in length and width.

## Insulation Solutions

An Affiliate of Meyer Enterprises

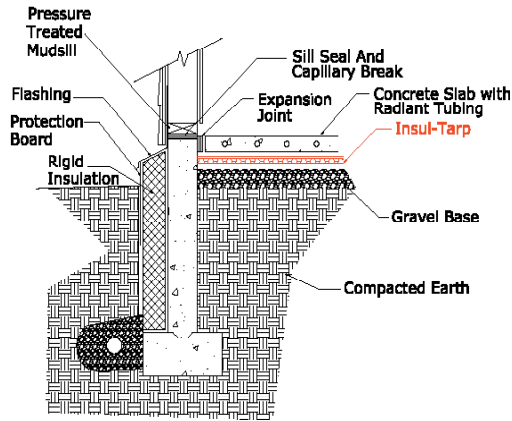
401 Truck Haven Road  
East Peoria, Illinois 61611

Toll Free 866.698.6562  
Phone 309.698.0062  
Fax 309.698.0065

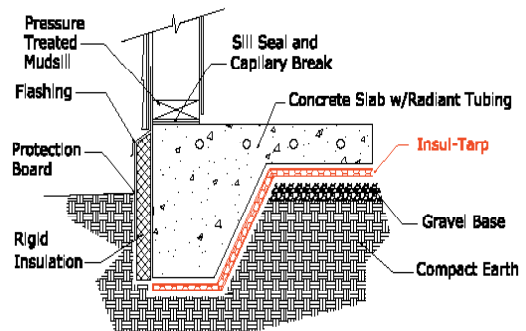
[www.insulationsolutions.com](http://www.insulationsolutions.com)



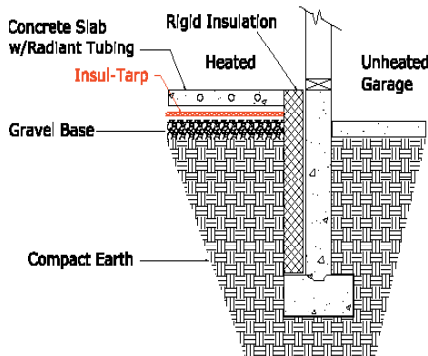
**Floating Slab on Grade w/Exterior Perimeter Insulation**



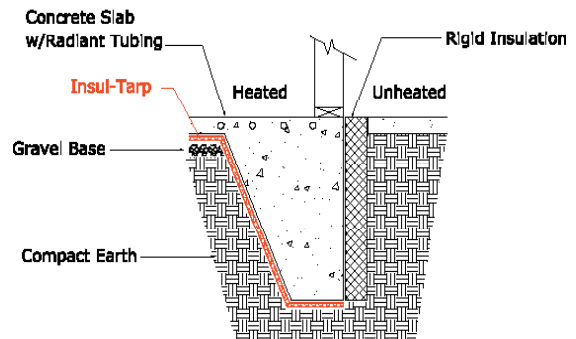
**Monolithic Slab On Grade Insulation Details**



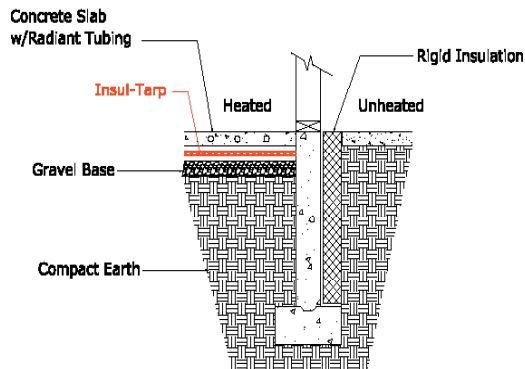
**Thermal Break Between Slabs of Heated and Unheated Floor Spaces**



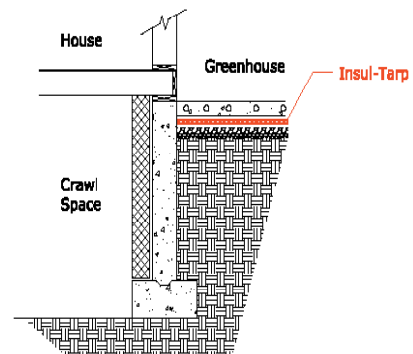
**Thermal Break Between Slabs of Heated and Unheated Floor Space**



**Thermal Break Between Slabs of Heated and Unheated Floor Space**



**Thermal Break Between Heated Space Slabs And Unheated Crawl Space**



**Note:** Check with local building codes if you are not familiar with code requirements.