

INSUL-TARP® FORM COVER

INSUL-TARP® FORM COVER
CONCRETE CURING BLANKET
AVAILABLE ROLL SIZES: 18" x 50' & 24" x 50'

InsulationSolutions®

[PRODUCT DESCRIPTION AND USE]

Insul-Tarp® Form Cover is a concrete curing blanket designed for both hot and cold weather curing. **Insul-Tarp® Form Cover** allows the concrete to maintain sufficient levels of water and heat so that the concrete can achieve it's desired physical properties.

Insul-Tarp® Form Cover also protects the concrete from outside weather elements such as wind, rain, sleet and snow.

Insul-Tarp® Form Cover is most commonly used for all types of wall forms, slabs-on-grade, curbs, gutters, footings and pier boxes. **Insul-Tarp® Form Cover** is manufactured with a layer of white cross-woven polyethylene, reflective aluminum foil, HD closed cell foam, HD polyethylene bubble, reflective aluminum foil and a layer of black cross-woven polyethylene.

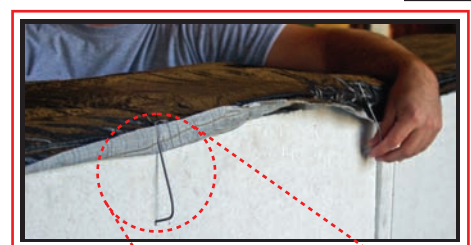
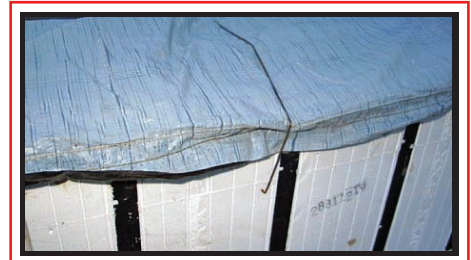
The black polyethylene layer faces up during cold weather curing, which absorbs and transfers the heat produced from the sun down into the concrete. In cold weather conditions, heat produced from the concrete is lost to the exterior environments. The reflective aluminum within the tarp helps reduce this heat loss.

During hot weather curing **Insul-Tarp® Form Cover** is positioned with the low emissive white polyethylene layer facing up. This allows the heat generated from the sun to be reflected, which prevents the water in the concrete from evaporating too quickly. Along with the low emissive white polyethylene layer, the interior reflective aluminum layers play a big part in redirecting the radiant heat gain as well.

Form Clips™ are available for holding the tarp in place during the curing process. The **Form Clips™** are specifically designed for use with ICF's (insulated concrete forms) but can also be used with all types of form work. The **Form Clips™** are simply applied over the **Insul-Tarp® Form Cover** and easily pressed into the foam.

[BENEFITS]

- Manufactured in 18" and 24" widths for [quick installation]
- Incorporates patented [reflective technology]
- [Protects the concrete] from harmful weather elements
- [Moisture Resistant] to allow for optimal curing conditions
- Available [Form Clips™] easily hold the tarp in place



FORM CLIP™
PATENT PENDING

InsulationSolutions®

401 Truck Haven Road • East Peoria Illinois 61611
TF: 866.698.6562 • P: 309.698.0062 • F: 309.698.0065

TOMORROW'S TECHNOLOGY TODAY
www.insulationsolutions.com

