

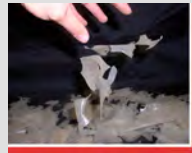


Importance of High Performance Under Slab Vapor Barriers

Concrete is a naturally porous material. Unprotected/under protected concrete slabs (slabs without a high performance vapor barrier/retarder) gain water vapor, though vapor diffusion, from sources below the slab. This moisture migration creates problems such as: flooring failures, poor indoor air quality, mold, mildew and fungi.

The Wrong Solution

A quick and common solution for this moisture migration is to use a standard 6-mil or 10-mil polyethylene sheeting (poly). Standard poly is a low grade recycled film that not only breaks down over time but is prone to tears and punctures from regular construction traffic.



The Right Solution

A high performance under slab vapor barrier such as Viper VaporCheck II (Viper II) is becoming a more recognized solution to moisture migration. Viper II is uniquely manufactured to incorporate superior resistance against punctures, tears and water vapor. With these properties, Viper II creates a monolithic barrier between the concrete slab and the soil that is virtually impervious to water vapor and soil gases. Most importantly, Viper II maintains these properties (long term) thus performing and lasting the lifetime of the building. Viper II helps by presenting all parties involved with an inexpensive insurance policy against costly building liabilities associated with water vapor migration through concrete slabs.



If you are currently specifying Viper VaporCheck II we greatly appreciate your support and invite you to visit our website for up-to-date product information and to take our AEC Daily continuing education course. If you are not familiar with Viper II or high performance vapor barriers, we recommend taking our AEC Daily course, "Under-Slab Vapor Retarders/Barriers: Restricting Moisture Infiltration" and visiting our website for more information on the importance of Viper VaporCheck II. Below are links to our continuing education course, website and social media.



"UNDER-SLAB VAPOR RETARDERS/BARRIERS: RESTRICTING MOISTURE INFILTRATION"



Insulation Solutions®
WWW.INSOLUTIONSOLUTIONS.COM

